

# GP7000TE



GP7000TE Professional series gasoline generating sets, 3000 rpm, sturdy and easy to handle, specially designed for professionals and yards. These generating sets have been designed with dedicated electrical panel with residual current protection and oversized protective rainproof cover. 3000 rpm gensets have been designed for stand-by use only. Not recommended using for more than 6 hours continuously or more than 500 hours/years



PRIME POWER		STAND-BY POWER	
kVA	kW	kVA	kW
7	<b>5,6</b>	7,7	<b>6,1</b>

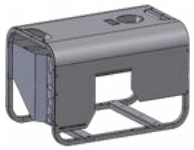
WEIGHT	DIMENSIONS		
kg	L [mm]	W [mm]	H [mm]
76	<b>825</b>	<b>550</b>	<b>530</b>

All data can be found out in the original technical datasheet of the engine and the alternator. Values shown are nominal values, they can change in every moment and without warning.

## TECHNICAL DETAILS

<b>ELECTRICAL DATA</b>	Electrical system type	3F+N	~
	Power factor	0,8	φ
	Voltage	400	V
	Frequency	50	Hz
	Ampere rating	10,1	A
<b>ENGINE DATA</b>	Engine	HONDA GX390	
	Engine emissions	STAGE V	
	Standards Engine power	8,6 (6,4)	Hp (kW)
	Rpm	3000	
	Nr. of cylinders	1	
	Engine starting system	Manuell starter	
	Displacement	389	cc
<b>FUEL CONSUMPTION DATA</b>	Fuel type	Petrol	
	Consumption	2	lt/h @ 75%
	Tank capacity	15	lt
	Autonomy	7,5	h
<b>ALTERNATOR DATA</b>	Alternator	LINZ ELECTRIC – NSM	
	Type	Self-excited, with brushes	
	Voltage regulation	AVR	
	Voltage precision	± 1,5	%

## STANDARD EQUIPMENT



Steel base frame, epoxy powder painted



Bigger fuel tank for greater



autonomy Ant-vibration dampers



First filling liquids



Electric starting with 12V battery



Automatic voltage regulator (AVR)



Electric manual panel with multimeter and hour counter:  
-n.1 schuko and n.1 230V 16A 3P + n.1 230V 32A 3P  
ECC sockets  
-12VDC socket. MCB with residual current protection



Slow trolley for manual handling



Automatic mains failure panel  
-With integrated automatic transfer switch and battery charger